
Unit 2, Lesson 1



Introduction to Agriculture Business Careers

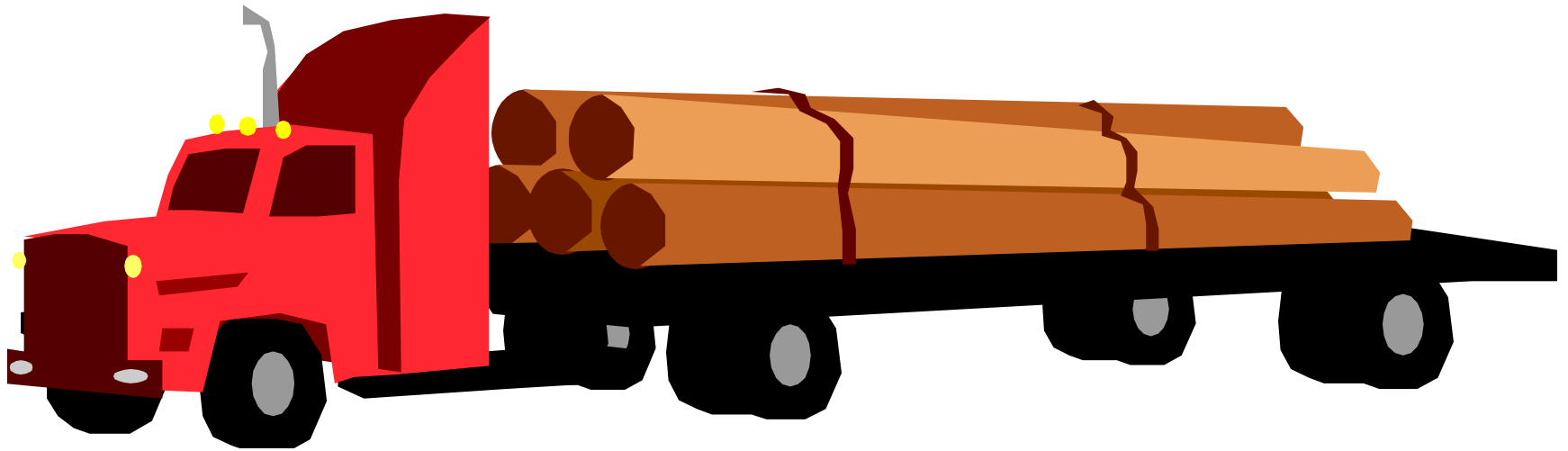
Production Agriculture



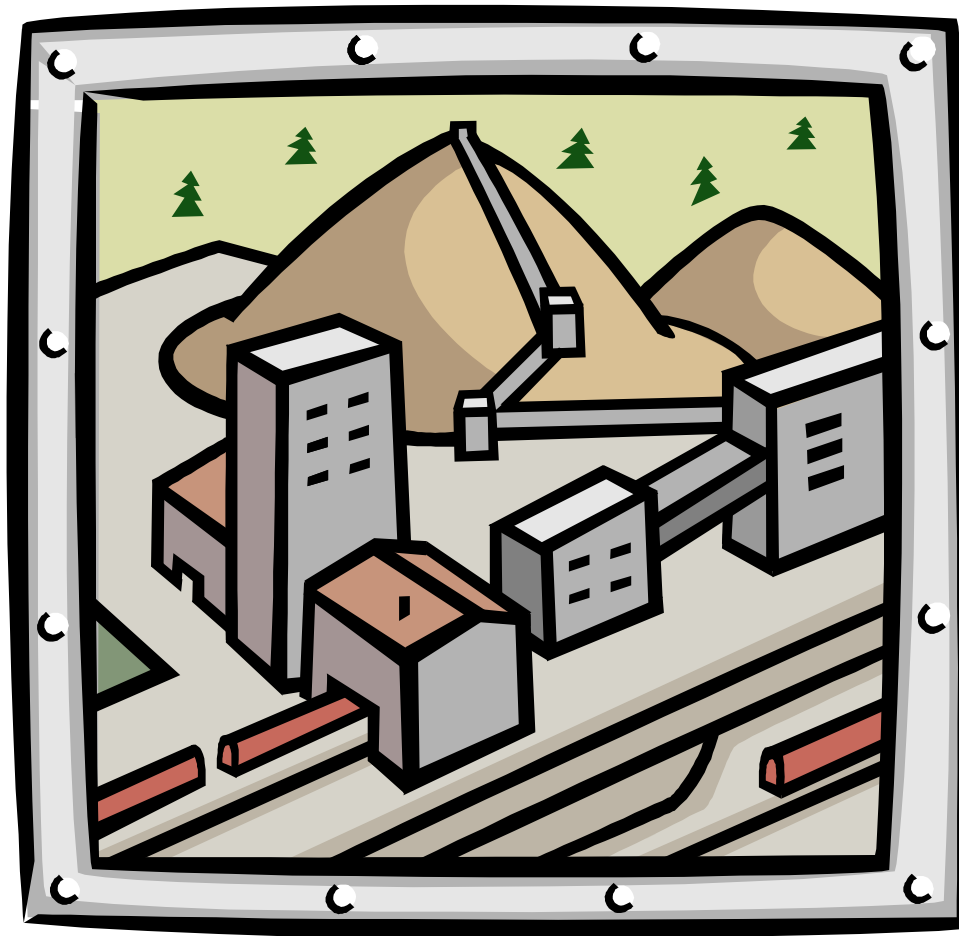
What percent of
our population is
in production?

2%

Agriculture Distribution



Agriculture Processing



Ag Businesses



JOHN DEERE

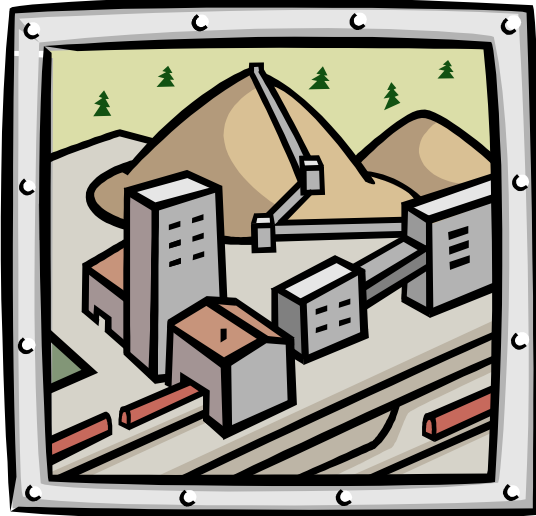
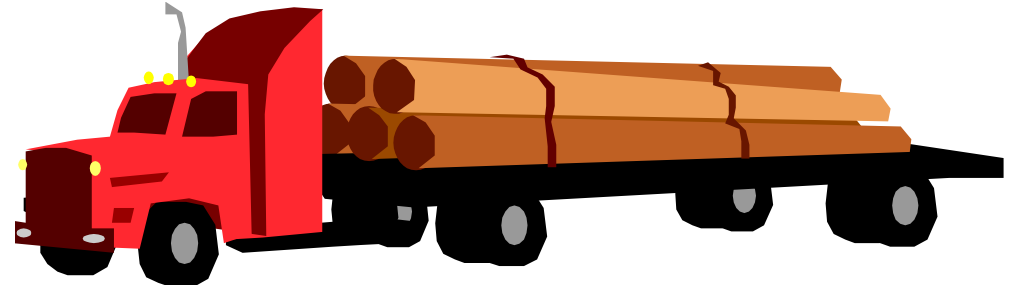
Remember Ag businesses are involved in each sector of the Agriculture Industry!

Return to your drawings, and add in all of the Ag businesses you can think of!

Now, what percent of the population is involved in all of the agriculture businesses?

20%! One in every five jobs!

Agriculture is?



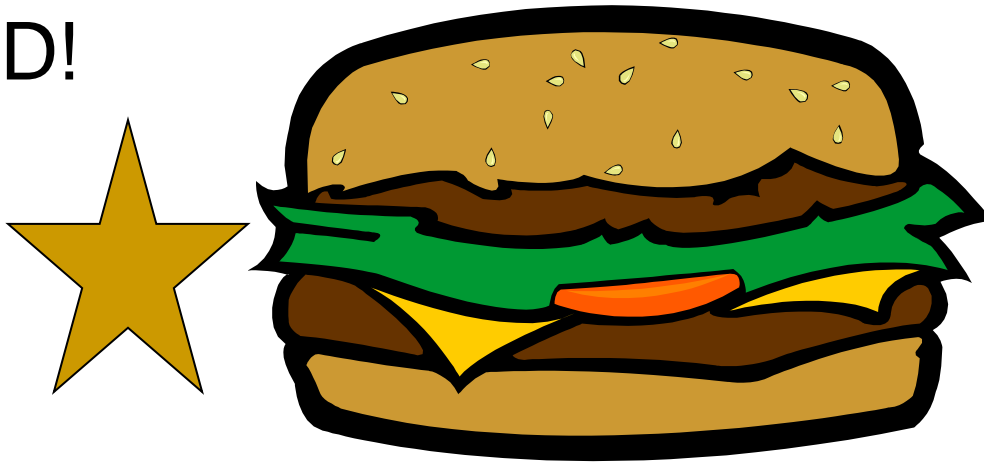
JOHN DEERE

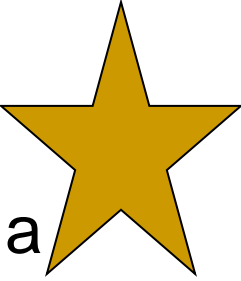
Agriculture is...

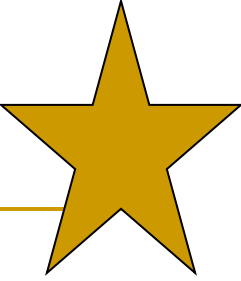
- The production, processing, distribution and services needed to get an agriculture product from the farm to the consumer.
-

Let's focus on our industry...

■ FOOD!



Two all beef patties, special sauce, lettuce, cheese, pickles, onions on a sesame seed bun! That's right – a  BIG MAC!

What are all of the ag business processes necessary to deliver a BIG MAC? Work in groups of three to list all of them! 

Of all of these industries, which are you most interested in doing?

- Why?
 - Record which sector of the agriculture industry you are most interesting in pursuing in your notebook.
 - Can you think of an SAEP that might support this career?
 - Agriculture business is a vast and rewarding career!
-