

# Ag Fact!

---

- The most common beef breed in the US is \_\_\_\_\_!

# Ag Fact!

---

- The most common beef breed in the US is angus!

# Angus



- Originated in Scotland
- Solid black in color
- Naturally polled
- Consumer preference led to Certified Angus Beef

# Hereford

- Originated in Hereford, England
- Red with white head, legs, and underline
- Horned
- Early maturing
- “Mothering” breed



# Polled Hereford



- Developed in Iowa by Warren Gammon
- Naturally hornless
- Red with white face, legs and underline

# Shorthorn

- Originated in England
- Red; red & white or roan in color
- Originally used as a dual purpose breed for meat and milk
- Sometimes called the Durham breed



# Simmental



- Originated in Switzerland
- Oldest breed of cattle in the world
- Large, powerful breed
- Brought to the United States in 1971
- Orange/Yellow and white to black in color

# Charolais



- Originated in France
- Traditionally white in color
- Long bodied, large cattle
- Heavily muscled
- Coarse looking



# Maine Anjou



- Originated in France
- Dark red with white markings or black
- Developed by crossing the Mancelle breed with the Shorthorn breed

# Brahman



- Originated in India
- Able to survive on very little, poor feed
- Insect & heat resistant
- Excess skin and large hump on back
- White to gray, red to black
- Sweat glands

# Cheviot



- Originated in Scotland
- Resistant to cold, windy conditions
- White, wool free faces
- Long wool type
- Wool has a helical crimp
- Tend to be resistant to worms and footrot

# Columbia

- Developed by the US Department of Ag
- Developed to thrive on Western ranges
- Produce medium wool and large amounts of meat



# Dorset

- Originated in Europe
- Medium-sized breed with high quality, white wool
- Most popular white-faced breed in the United States
- Horned and polled varieties exist



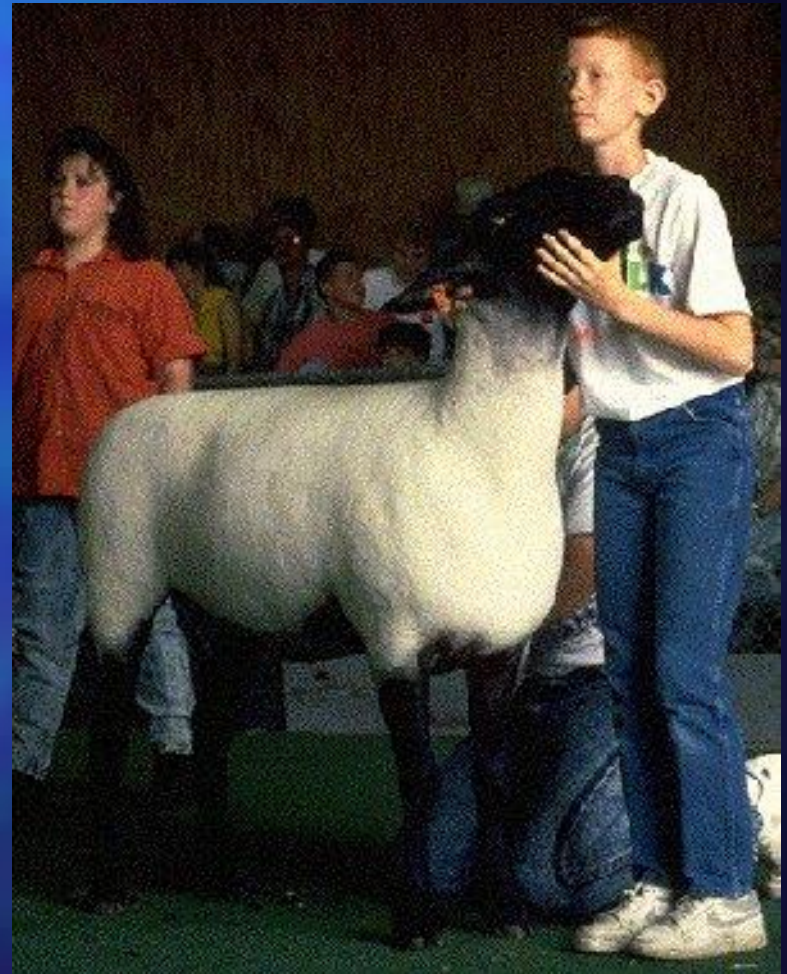
# Hampshire



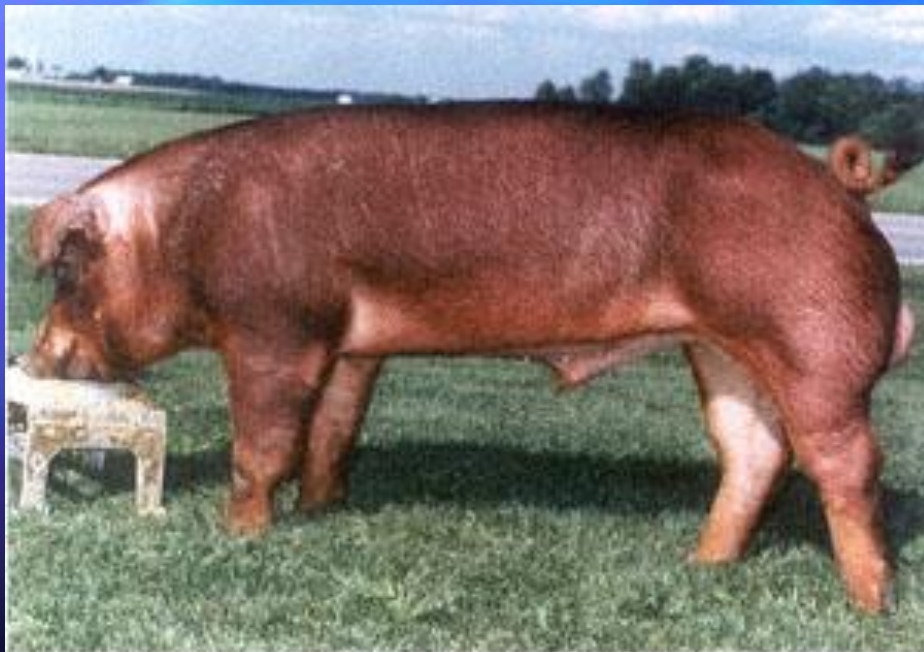
- Originated in Hampshire, England
- Black face and legs
- Mild demeanor
- Unbroken wool cap should extend from the neck over the forehead

# Suffolk

- Originated in England
- Most popular breed in the US today
- Produce large amounts of meat
- White with black faces and legs



# Duroc



provided by National Swine Registry

- Originated in the United States
- Solid red
- Drooped ears
- Slight dish to the face
- Excellent meat type hog



# Hampshire

- Originated in the United States
- Probably the oldest American breed
- Black with a white belt
- Small, erect ears
- Well-known meat breed



provided by National Swine Registry

# Yorkshire

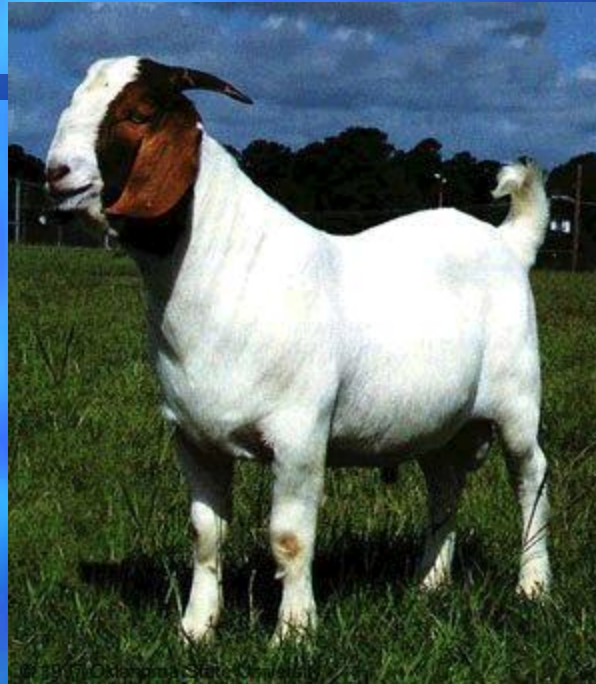


provided by National Swine Registry

- Originated in England
- White
- Large, erect ears
- Known as “The Mother Breed”
- Produces large litters
- Bacon-type hog

# Major Breeds Goats

## Boer (South Africa)



- † Also known as the Africander
  - † Early maturing
- † Predominantly white with red head but some solid red exist.

**Meat Breed**

# Major Breeds Goats

## Kiko (New Zealand)



- Developed in New Zealand, 1980's
  - Extremely hardy
  - Low input required
  - Fast growth
  - High fertility

# Appaloosa

- Well known for speed
- Used by the Nez Perce Indians as war horses
- Originated from Spanish horses left behind by explorers



© 1997 Oklahoma State University

# Arabian



- Originated from Bedouin desert
- Known for strength and stamina
- Small muzzle
- High tail setting
- Short back

# American Quarter Horse



© 1997 Oklahoma State University

- Developed in the United States as a race horse
- Named for their fast times in the 1/4 mile
- Known for speed, strength & intelligence
- Most popular horse breed in the world

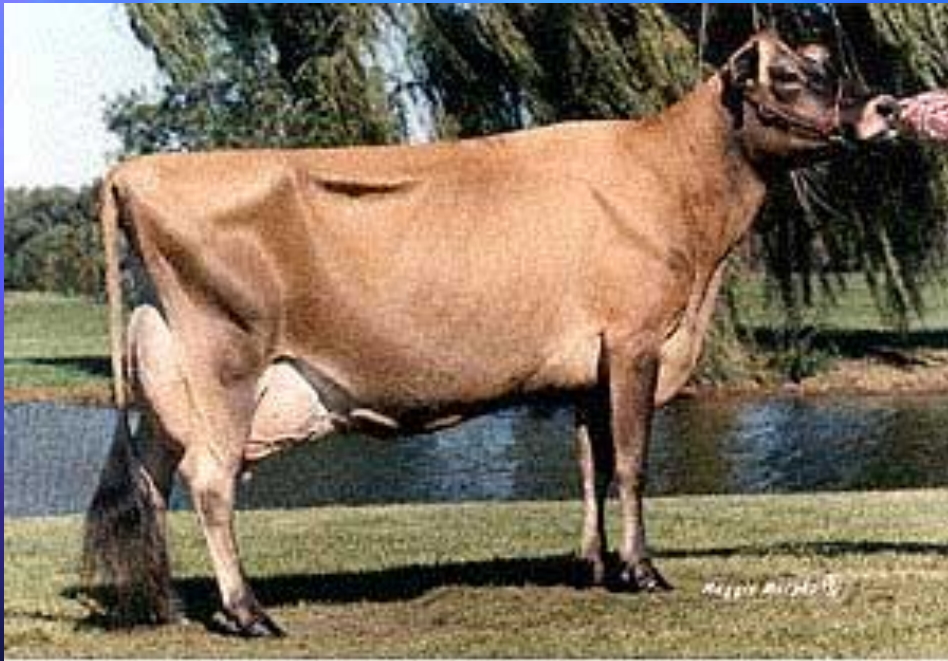
# Thoroughbred



- Designed to sustain speed over distances while carrying weight
- Average 16 hands in height
- Revolutionized the racing industry



# Jersey



provided by Hoard's Dairyman

- Small bodied, gray or brown
- Highest butter-fat content of dairy breeds
- From England

# Holstein



Large, black-white-red bodied cattle

Highest volume producer of milk

Originated in Europe (Netherlands)

# Guernsey



- Milk high in betacarotene
- Developed off coast of France