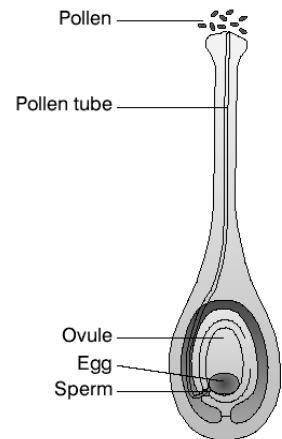


Sexual Reproduction Notes

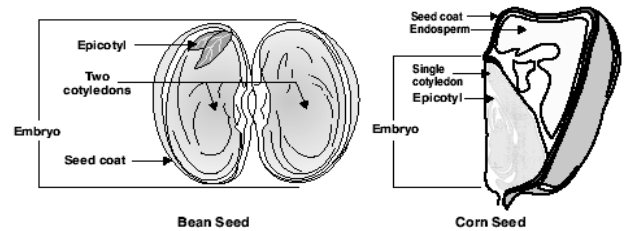
Pollination

- Self Pollinating:
- Cross Pollinating:
- Moved by
 - o Weather:
 - o Animals:



Seeds

- Seed coat:
- Embryo:
- Endosperm:
- Germination:
 - o Conditions for Germination:
 -
 -
 -
 -



Management

- Germinating Seeds
 - o Conditions:
 - o Germination Rate:
- Transplanting
 - o When to transplant:
 - o Transplant Rate: