

# Livestock Terminology



8/7/2014

# Cattle



8/7/2014

Giving Birth: Calving

Newly Born: Calf

Young Male: Bull

Young Female: Heifer





**Mature Male: Bull**

**Mature Female: Cow**

**Castrated Male: Steer**

8/7/2014



# Sheep



8/7/2014

Giving Birth: Lambing



Newly Born: Lamb



Young Male: Ram

Young Female: Ewe





Mature Male: Ram

Mature Female: Ewe

Castrated Male: Wether



# Swine



8/7/2014



Giving Birth: Farrowing

Newly Born: Piglet

Young Male: Boar

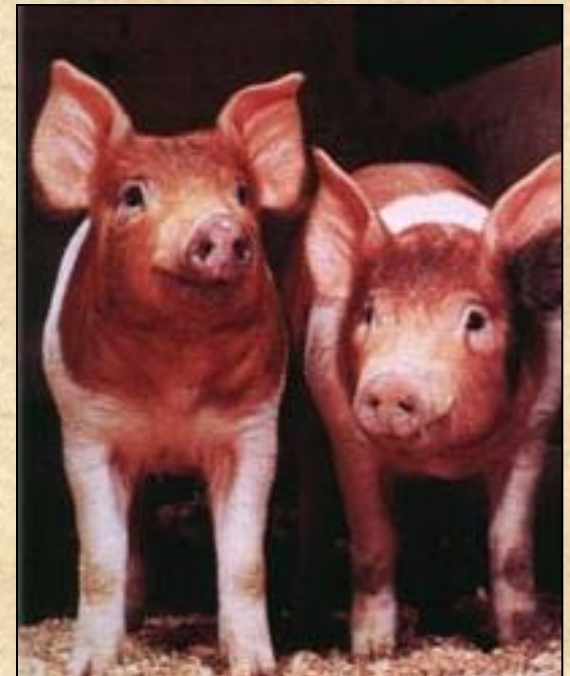
Young Female: Gilt



Mature Male: Boar

Mature Female: Sow

Castrated Male: Barrow



8/7/2014



# Horses



8/7/2014



Giving Birth: Foaling

Newly Born: Foal

Young Male: Colt

Young Female: Filly



Mature Male: Stallion

Mature Female: Mare

Castrated Male: Gelding



# Chickens



8/7/2014



Giving Birth: Laying

Newly Born: Chick

Young Male: Cockerel

Young Female: Pullet



**Mature Male: Rooster**

**Mature Female: Hen**

**Castrated Male: Capon**



# What is a breed?

Animals that, through selection and breeding, have come to resemble one another and pass on their traits uniformly to their offspring.



# Beef Breeds

What's the difference between  
British breeds and  
continental breeds?

# Angus

- Origin: Aberdeen, Scotland
- Characteristics: Black, some have white bellies, polled\*
- Smooth hair coat
- Medium frame size
- Heavy muscled

— \*Polled: born without horns (genetic trait)



© 1987 Oklahoma State University

# Hereford

- Origin: Herefordshire, England
- Characteristics: Light yellow to cherry red with white belly; thick, curly hair coat
- Medium frame size
- Medium muscled





# Shorthorn

- Origin: Northern England
- Characteristics: Color varies, mostly roan (red and white color)
- Medium to large frame size
- Medium muscle



# Limousin

- Origin: South Central France
- Characteristics: Most commonly red; can be black with lighter eyes and belly
- Medium to large frame size, long body
- Heavy muscle



# Maine Anjou

- Origin: Northwest France
- Characteristics: Deep red with white markings; most commonly solid black in color
- Large frame size
- Heavily muscled





# Swine Breeds

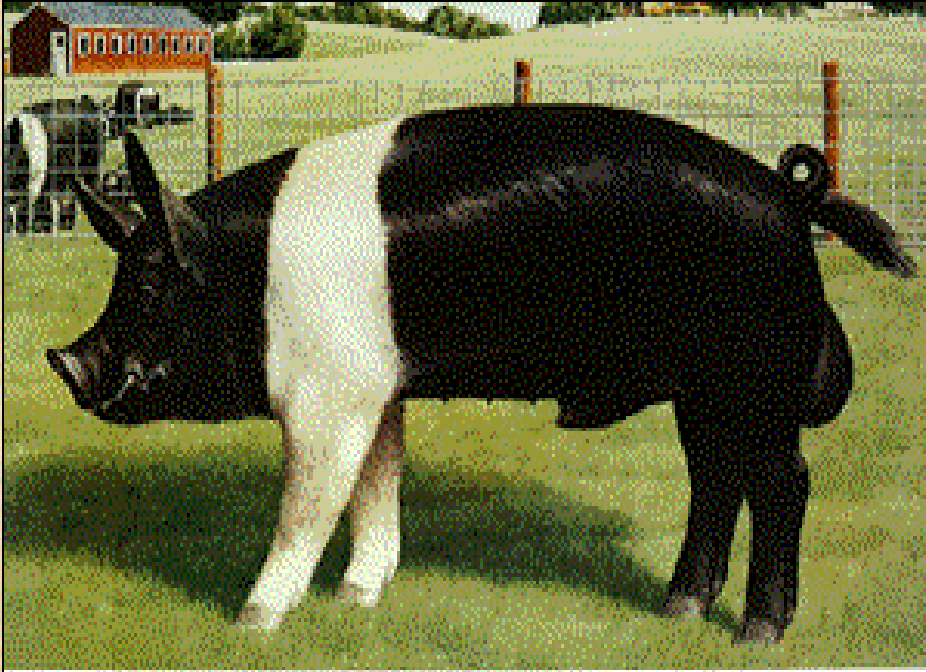


# Duroc



- Origin-New York/New Jersey
- Ears- Droopy
- Color- Cherry Red
- Misc.-Large frame, fast gainers, good mothers, popular breed

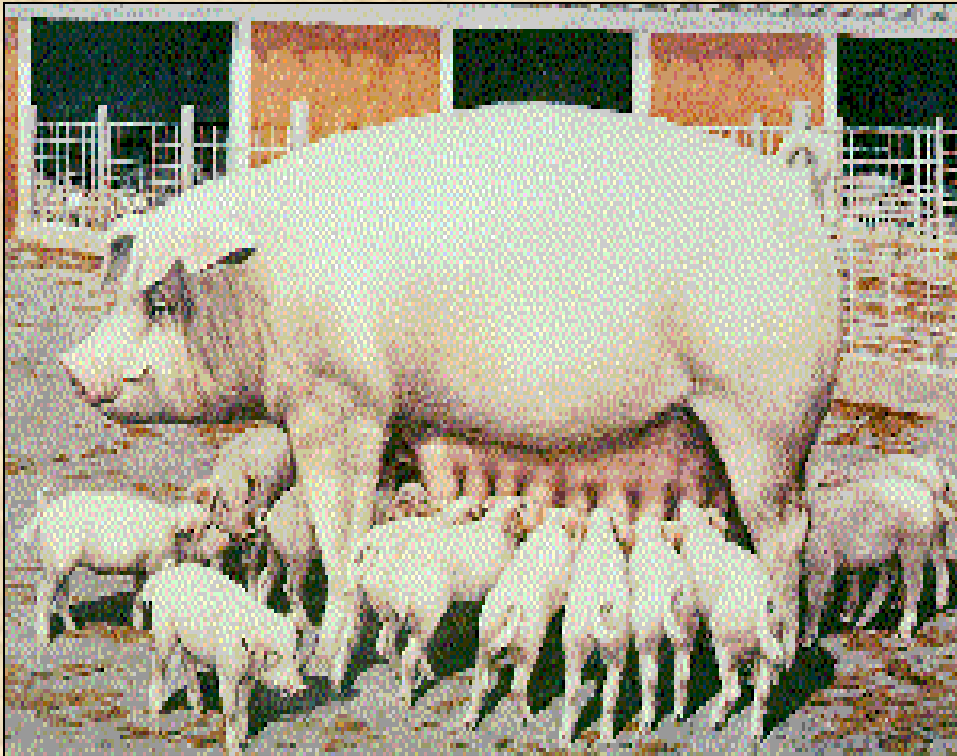
# Hampshire



- **Origin-**  
Kentucky
- **Ears-Erect**
- **Color-Black**  
with a white  
belt
- **Misc.-The**  
“meat breed,”  
excellent  
carcass

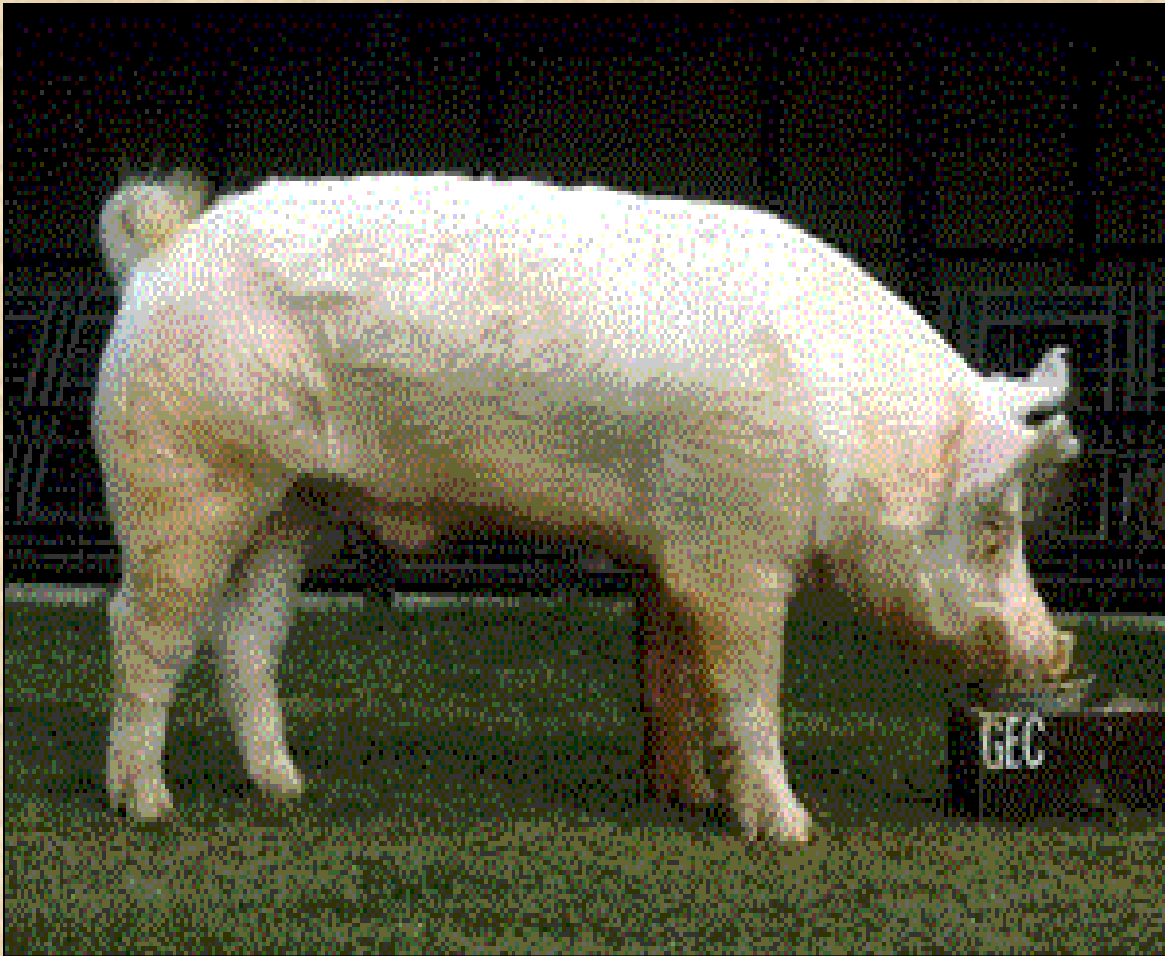


# Chester White



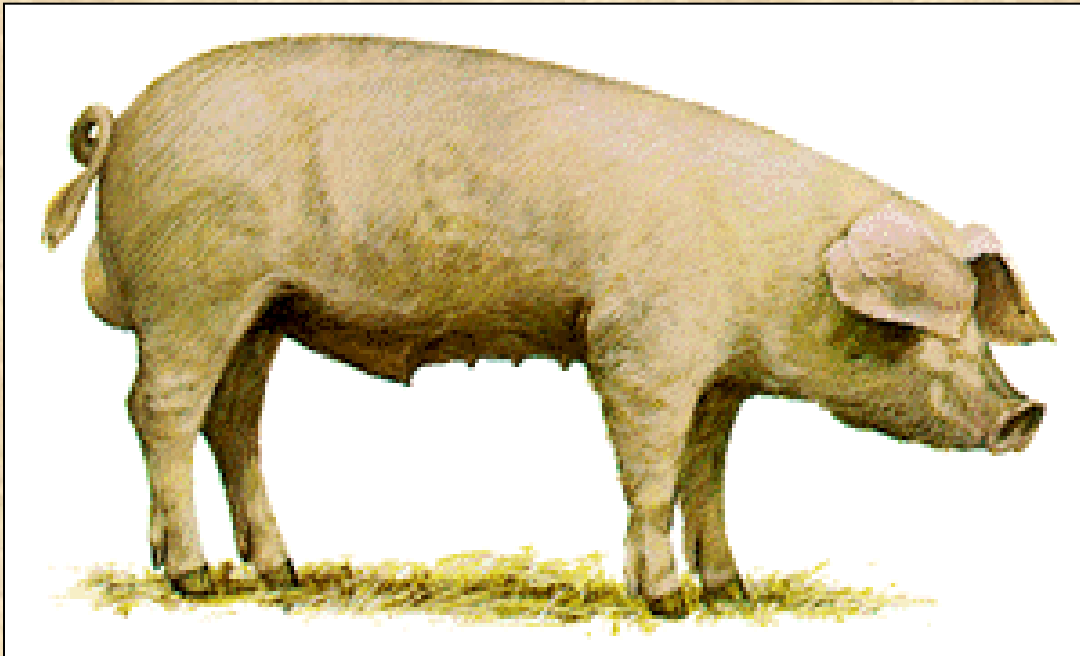
- **Origin-**  
Pennsylvania
- **Ears-Droopy**
- **Color-White**  
with blue  
freckles
- **Misc.-good**  
mothers,  
large frame

# Yorkshire



- **Origin- England**
- **Ears-Erect**
- **Color- White**
- **Misc.-the mother breed, largest litters**

# Landrace



- **Origin-**  
**Denmark**
- **Ears-Droopy**
- **Color-White**
- **Misc.-**  
**extremely**  
**long body**

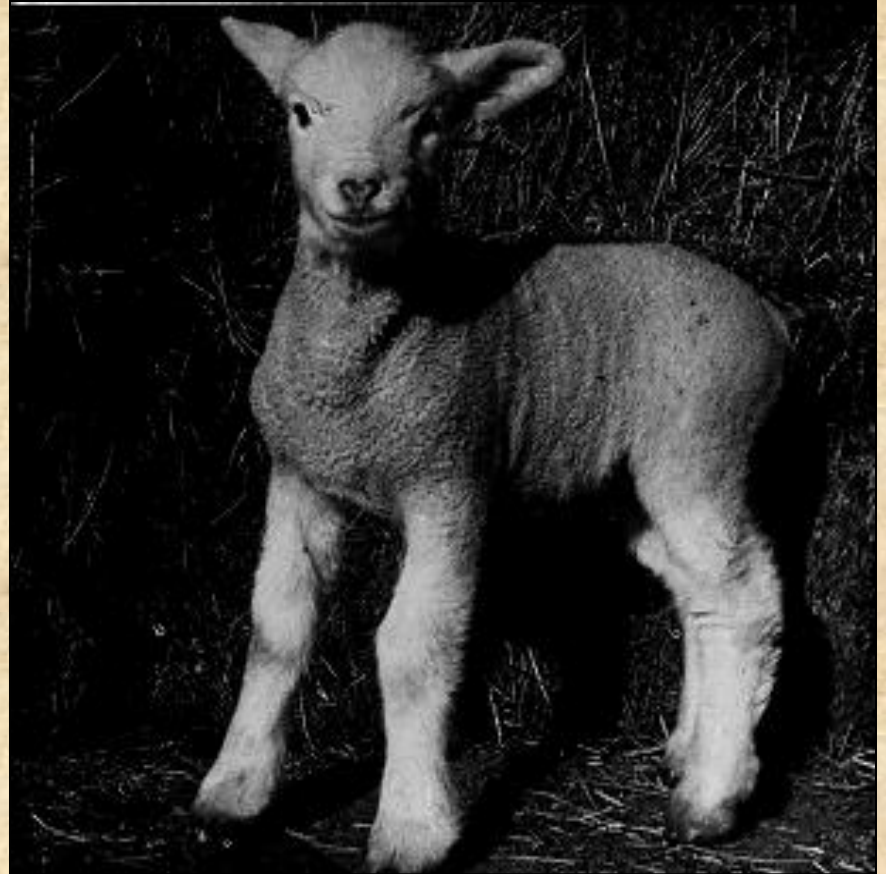


# Sheep Breeds



# Columbia

- Developed by the U.S. Department of Agriculture
- Developed to thrive on Western ranges
- Produce medium wool and large amounts of meat





# Hampshire

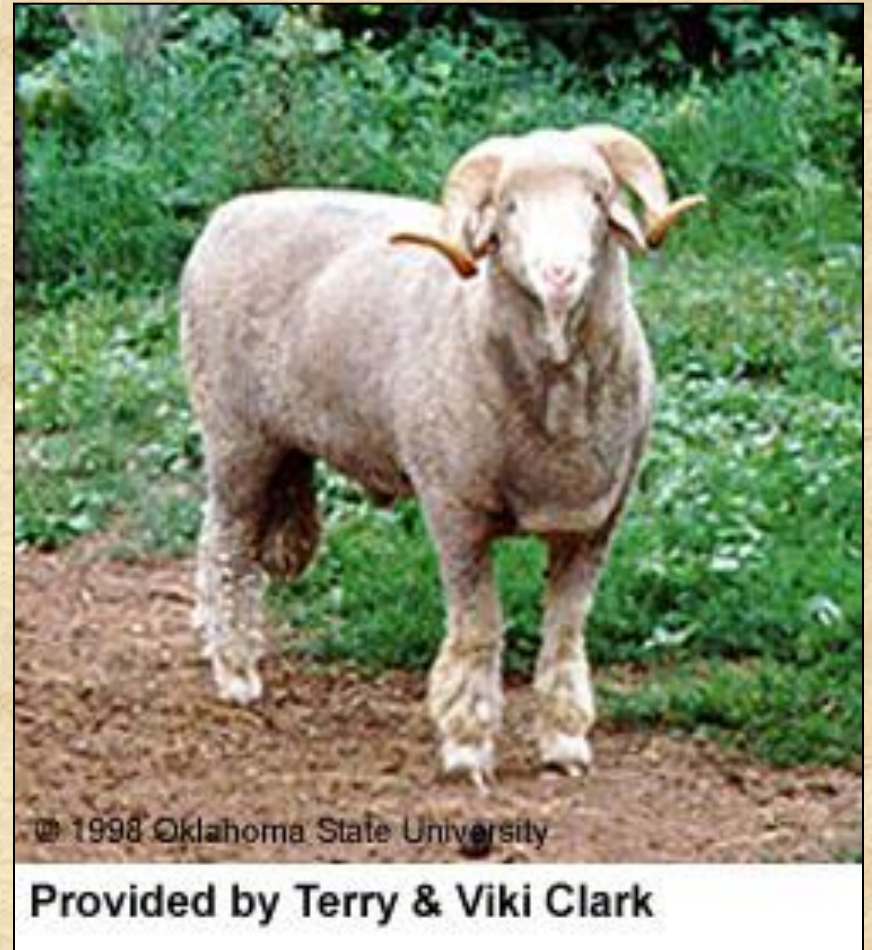


- Originated in Hampshire, England
- Black face and legs
- Mild demeanor
- Unbroken wool cap should extend from the neck over the forehead



# Rambouillet

- Originated in Spain
- Shipped to France in 1801
- White in color



# Southdown



- Developed in England
- Well suited to farm flock production
- Gray face with white body
- Adapted to wet conditions



# Suffolk

- Originated in England
- Most popular breed in the United States today
- Produce large amounts of meat
- White with black faces and legs

